

Mar 2011 Volume 56 Number 2



# NORRIS

ELECTRIC NEWS MAGAZINE

# 13

**ENERGY-SAVING TIPS  
FOR WASHER  
AND DRYER USE**

**BIG  
PLANS IN  
HICKMAN**

**2011  
YOUTH  
ENERGY CAMP**

## contents

### NORRIS ELECTRIC NEWS

"Dedicated to Serving You"

(USPS-391-880)

Published Bi-Monthly by

THE NORRIS PUBLIC

POWER DISTRICT

606 Irving Street,

Beatrice, Nebraska

Phone: 402.223.4038

www.norrisppd.com

e-mail: comments@norrispower.com

Subscription Rates:

Thirty-five cents per month

Postmasters: Send notices

and returns to:

Norris Public Power District,

Box 399, Beatrice, Nebraska 68310

Periodicals Postage Paid at Lincoln,

Nebraska and additional offices

#### Events Calendar Information

Please plan to submit event information two months in advance. We reserve the right to limit ads based on space availability. Please send events to: [communityevents@norrispower.com](mailto:communityevents@norrispower.com) or fax to 402.228.2895

#### 2011 Officers and Directors

Bruce Tegtmeier, Jansen, President

Gary Kroese, Firth, Vice President

Dennis Buel, Hickman, Treasurer

Rod Heinrichs, Carleton, Secretary

Dan Dell, Beatrice

Steward Huneke, Wilber

Mark Knobel, Fairbury

John Novotny, Odell

Roger Rada, Tobias

Randy Steinhausen, Lincoln

Berneal Warner, Waverly

#### On the Cover

Nebraska is in full bloom in March and April. Will you be planting a garden this spring?

**3** || Internal news



**4** || 2010 Norris Financial Report

**8** || Youth Energy Camp



**9** || Hickman unveils plan for a recreational and event complex



**10** || Refrigerator Recycling Program

**11** || Customer notification services

**12** || EnergyWise<sup>SM</sup> tip: Save energy while doing laundry!

**14** || 1st Quarter Operation Round Up results

**15** || Nicole Sheffield of Filley is the March Cook of the Month

### NORRIS PUBLIC POWER DISTRICT CONTACT NUMBERS

#### Main Office – Area III

Beatrice: 402.223.4038

Toll Free: 1.800.858.4707

Hours: M-F 7:30 AM-4:30 PM



#### Area I

Hebron: 402.768.6515

Toll Free: 1.800.827.8099

Hours: M-F 8:00 AM-4:30 PM

Closed each day from 12:00 PM-12:30 PM

Fairbury: 402.729.3835

#### Area II

Roca: 402.423.3855

Toll Free: 1.800.743.3899

Hours: M-F 7:30 AM-4:30 PM

Crete: 402.826.2517



## 2011 Lineman Scholarship

Nick Ruskamp has been awarded the 2011–2012 Electric Lineman Training \$1,500 Scholarship to attend Northeast Community College in Norfolk, Nebraska. Nick is the son of Loren and Elaine Ruskamp of rural Firth. He is a senior at Freeman High School in Adams and is the oldest of three children. He participates in football, American Legion baseball, track, National Honor Society and the speech team. He is currently employed part-time as a dietary aide at Gold Crest Retirement Center in Adams. His hobbies are hanging out with friends, going to movies and playing video games and sports. Congratulations, Nick, and good luck at Northeast Community College in the Lineman Training Program!



## 2011 Officers

for the  
Norris Public Power District  
**Board of Directors**

*Pictured L to R front row:*  
Bruce Tegtmeier, President and  
Gary Kroese, Vice President

*Pictured L to R back row:*  
Rod Heinrichs, Secretary and  
Dennis Buel, Treasurer

Norris Public Power District is a public corporation and a political subdivision of the State of Nebraska that provides electric power to approximately 18,000 customers in a five-county area of southeastern Nebraska consisting of Gage, Jefferson, Lancaster, Saline and Thayer Counties. This financial report is presented to provide an overview of the District's finances for 2010 in comparison to 2009.

# 2010 FINANCIAL REPORT

## OPERATING REVENUES

Operating revenues increased 11.9% to \$51.82 million in 2010 from \$46.29 million in 2009. The increase can primarily be attributed to an average customer rate increase of 6.8% on January 1, 2010. Kilowatt-hour sales were nearly 700 million in 2010, representing a 3.1% increase over 2009. The remaining 2.0% increase is primarily due to a change in load factor for certain large power customers.

The increase in kilowatt-hour sales is evenly divided between residential and large power customers. In comparing 2010 to 2009, the months of January, February and August were extreme weather months, which resulted in higher energy usage for District customers. In 2010, the District added two large power customers that accounted for the increase in kilowatt-hour sales in this category.

## COST OF POWER

Cost of power increased 8.4% to \$34.03 million in 2010 from \$31.40 million in 2009. The District's cost of power on a kilowatt-hour basis increased 6.1% in 2010 due primarily to a wholesale rate increase by the District's primary supplier. Kilowatt-

hour purchases were nearly 735 million in 2010 representing a 2.1% increase over 2009.

## ENERGY DATA & RATE INCREASES

The District is continually evaluating and implementing ways to improve operating efficiencies and minimize operating cost increases for operating expenses directly controlled by the District. However, 75% of the District's operating expenses are not negotiable and represent the cost for the purchase of power, primarily from Nebraska Public Power District (NPPD). The District has a wholesale power contract with NPPD that is binding through December 31, 2021.

Over the last three years, NPPD's average rate increase to the District has been 8.3%. In response, the District has increased its customer

Energy Data	2010	2009
Kilowatt-hours sold	699,799,212	678,870,599
Average revenue per kilowatt-hour sold	\$0.0727	\$0.0668
Kilowatt-hours purchased	734,733,480	719,434,436
Average cost per kilowatt-hour purchased	\$0.0463	\$0.0436
Average actual monthly load factor (%)	72.66	72.47
Annual actual load factor (%)	55.01	61.36
Line loss (%)	4.75	5.64



Bruce Vitosh  
Manager of Finance & Accounting

rates by an average of 6.6%. Over the same time period, the District's operating expenses, excluding purchased power, has increased on average 3.9%.

**OTHER OPERATING EXPENSES**

Other operating expenses increased 4.7% in 2010 in comparison to 2009. The significant items contributing to the 2010 increase were an increase in right-of-way and general maintenance costs of \$168,321, depreciation expenses of \$168,214 and meter inspection and replacements of \$140,409. These increases were offset by a decrease in outage restoration costs of \$246,601.

**NONOPERATING REVENUES AND EXPENSES**

Investment and other income increased \$135,191 in 2010 due to a full year's recognition of a gain on a sale of a portion of the District's service territory to Lincoln Electric System. This increase was offset by a decrease in investment income of \$36,109 due to current market interest rates. Interest and amortization expenses decreased in 2010 as outstanding debt was paid down.

**INCREASE IN NET ASSETS**

With operating revenues and the capitalization of certain operating costs being higher than anticipated, the 2010 increase in net assets of \$6.05 million was significantly higher than the \$3.57 million realized in 2009. Annual increases in net assets are necessary to provide funds for reinvestment back into customer facilities and to cover debt service payments.

**CASH AND INVESTMENTS**

Total cash and investments on hand on December 31, 2010 were \$20.58 million, which was \$1.34 million higher than December 31, 2009. Of the \$20.58 million on hand, \$4.38 million is restricted for revenue bond reserves and the return of customer deposits. The remaining \$16.2 million on hand provides adequate cash and investments to meet operating needs.

**CAPITAL ASSETS**

Net capital assets increased 1.7% to \$89.13 million in 2010 from \$87.68 million in 2009. Major construction projects in 2010 included four and one-half miles of subtransmission line with three phase distribution underbuild and another four miles of subtransmission line in Thayer County. In

NORRIS PUBLIC POWER DISTRICT

**Customers & Miles of Line Data**

	December 31, 2010	December 31, 2009
Number of Customers	18,048	18,002
Total Miles Energized:		
Transmission Line	618	612
Distribution Overhead Line	3,926	3,927
Distribution Underground Line	490	484
Total Miles Energized	5,034	5,023
Number of Customers Per Mile	3.59	3.58
Operating Revenues	\$51,818,617	\$46,289,510
Per Customer	2,871	2,571
Per Mile of Line	10,294	9,216
Operating Expenses	\$45,617,778	\$42,469,252
Per Customer	2,528	2,359
Per Mile of Line	9,062	8,455
Electric Plant	\$134,269,714	\$130,382,257
Per Customer	7,440	7,243
Per Mile of Line	26,673	25,957
Long Term Revenue Bonds Payable	\$19,655,000	\$20,975,000
Per Customer	1,089	1,165
Per Mile of Line	3,904	4,176

Lancaster County, major construction projects included one mile of subtransmission line with three phase distribution underbuild and the relocation of a subtransmission line crossing Interstate 80. If Shana Schafer of Daykin would please call the Area 1 – Hebron office we will arrange to have a serviceman deliver your new clock radio.

**DEBT ADMINISTRATION**

Revenue bonds payable at December 31, 2010 were \$19.66 million as compared to \$20.98 million on December 31, 2009. The District did not access its credit line during 2010 to supplement working capital. All credit lines were paid in full as of December 31, 2010. The District's debt service coverage increased to 5.87 in 2010 from 3.87 in 2009.

# NORRIS PUBLIC POWER DISTRICT

## BALANCE SHEET

ASSETS	2010	2009
<b>CAPITAL ASSETS</b>		
Electric plant	\$134,269,714	\$130,382,257
Less accumulated depreciation	45,137,945	42,705,363
Net capital assets	<u>89,131,769</u>	<u>87,676,894</u>
<b>NONCURRENT ASSETS</b>		
Deferred charges	535,395	618,179
Investments	6,630,000	2,915,000
Restricted investments	2,357,885	2,230,000
Total noncurrent assets	<u>9,523,280</u>	<u>5,763,179</u>
<b>CURRENT ASSETS</b>		
Cash and cash equivalents	3,859,531	6,623,423
Restricted cash and cash equivalents	1,921,459	1,601,542
Investments	5,715,000	5,630,000
Restricted investments	100,000	245,000
Accounts receivable	4,879,100	4,605,171
Other receivable – FEMA	505,969	645,000
Unbilled revenue	808,240	830,185
Interest receivable	201,116	140,237
Materials and supplies inventories	2,878,641	3,341,841
Prepaid expenses	315,794	161,476
Total current assets	<u>21,184,850</u>	<u>23,823,875</u>
<b>TOTAL ASSETS</b>	<b><u>\$119,839,899</u></b>	<b><u>\$117,263,948</u></b>
<b>LIABILITIES AND NET ASSETS</b>		
<b>NET ASSETS</b>		
Invested in capital assets, net of related revenue bonds	\$68,688,140	\$66,270,360
Restricted	\$3,933,771	3,620,681
Unrestricted	13,647,716	10,327,392
Total net assets	<u>86,269,627</u>	<u>80,218,433</u>
<b>NONCURRENT LIABILITIES</b>		
Revenue bonds payable, excluding current maturities	19,655,000	20,975,000
Deferred customer credits	2,308,221	2,563,649
Deferred gain on sale of a portion of service territory	3,379,754	3,785,325
Other post retirement benefit obligation	530,447	335,341
Total noncurrent liabilities	<u>25,873,422</u>	<u>27,659,315</u>
<b>CURRENT LIABILITIES</b>		
Accounts payable	4,008,281	6,064,270
Accrued expenses	954,020	994,539
Accrued taxes	890,953	825,008
Consumer deposits	523,596	457,383
Current maturities of revenue bonds	1,320,000	1,045,000
Total current liabilities	<u>7,696,850</u>	<u>9,386,200</u>
<b>TOTAL LIABILITIES AND NET ASSETS</b>	<b><u>\$119,839,899</u></b>	<b><u>\$117,263,948</u></b>

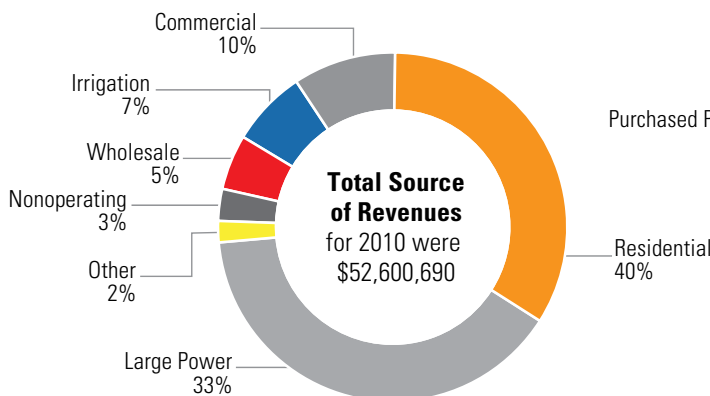
*Unaudited Statement*

**STATEMENT OF REVENUES & EXPENSES**

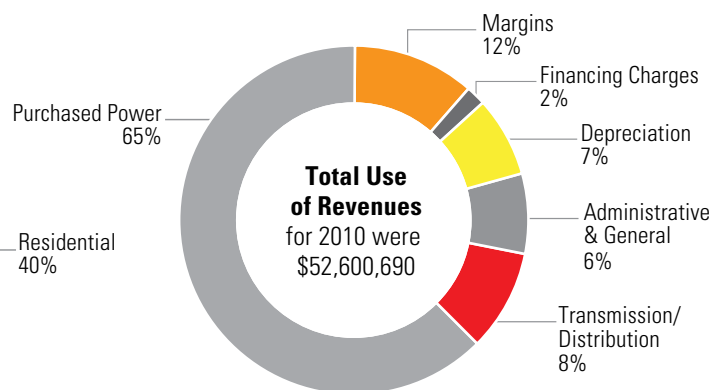
	2010	2009
<b>OPERATING REVENUES</b>		
Rural residential	\$15,413,767	\$13,880,839
Towns and villages	5,559,622	5,127,851
Irrigation	3,552,018	3,574,659
Small commercial	4,963,030	4,428,637
Large commercial and industrial	17,516,306	15,100,145
Public street lighting	226,396	213,482
Annual services	938,101	985,515
Sales for resale	2,738,989	2,350,024
Unbilled revenue adjustment	(26,445)	(281,749)
Total electric energy sales	50,881,784	45,379,403
Miscellaneous revenues	936,833	910,107
<b>TOTAL OPERATING REVENUES</b>	<b>51,818,617</b>	<b>46,289,510</b>
<b>OPERATING EXPENSES</b>		
Cost of power	34,029,423	31,396,728
Transmission and distribution	1,514,381	1,360,946
Consumer accounts	1,120,523	986,760
Consumer information & conservation	247,033	307,677
Administrative and general	1,821,845	1,718,131
Maintenance	2,970,450	2,953,101
Depreciation	3,901,485	3,733,271
Taxes and lease fees	12,638	12,638
<b>TOTAL OPERATING EXPENSES</b>	<b>45,617,778</b>	<b>42,469,252</b>
<b>OPERATING INCOME</b>	<b>6,200,839</b>	<b>3,820,258</b>
<b>INVESTMENT AND OTHER INCOME</b>	<b>782,073</b>	<b>723,098</b>
<b>INCREASE IN NET ASSETS BEFORE INTEREST AND AMORTIZATION EXPENSES</b>	<b>6,982,912</b>	<b>4,543,356</b>
<b>INTEREST AND AMORTIZATION EXPENSES</b>	<b>931,718</b>	<b>974,173</b>
<b>INCREASE IN NET ASSETS</b>	<b>\$6,051,194</b>	<b>\$3,569,183</b>

Unaudited Statement

**Source of Revenues for the Year Ended December 31, 2010**



**Use of Revenues for the Year Ended December 31, 2010**



# 2011 Youth Energy Camp



Are you wondering what you will do this summer? Do you have a desire to learn more about electricity, power generation and the rural electric program? If so, the Nebraska Rural Electric Association's Youth Energy Camp is calling your name! Each year Norris Public Power District sponsors up to four young men and women to attend the Nebraska Rural Electric Association's Youth Energy Camp. **This year's camp will be held July 11-15 at the State 4-H Camp in the Halsey National Forest.**

Set in the beauty of the Nebraska National Forest at Halsey, the camp is casual, yet educationally and personally challenging. The camp program offers each participant the opportunity to grow socially and learn something important at the same time. Through interesting workshops, demonstrations and presentations by regional experts addressing the many issues affecting the rural electric program, you will leave the camp after five days far more knowledgeable than when you first arrive. A highlight of the camp involves tours of the Kingsley Hydroelectric Power Plant at Lake McConaughy and Gerald Gentleman Station, a coal-fired power plant in Sutherland, which will provide for a first-hand look at the process of generating electricity.

The Youth Energy Camp is a program that challenges participants educationally, recreationally and socially. It was established as an operating cooperative and provides a "hands-on" approach to member-owned businesses by teaching approximately 75 students from Nebraska, Colorado, South Dakota and Wyoming, along with the help of adult counselors and junior counselors. The adult counselors are employees of rural electric systems who donate their time and talents to the camp. The junior counselors are selected by their peers to return to next year's camp.

On the first day of camp, a board of directors is elected to oversee the operation of the newly formed electric cooperative. The board then chooses a general manager to oversee the committee activities and act as a liaison between the counselors and campers.

Every participant has a role in the workings of the camp. Students can participate in the Ambassador competition or actively seek a position on the Board of Directors. Each student must also volunteer to serve on at least one of the committees responsible for various aspects of the camp activities. There is even a talent show where the campers can show off their various talents.

High school students who attend the energy camp may compete for a chance to participate in the National Rural Electric Cooperative Association's Youth Tour in Washington D.C. with expenses paid by the Nebraska Rural Electric Association. Three students are chosen as part of the Ambassador competition held during camp.




The competition involves submitting an application at camp, presenting a self-introduction speech and delivering a five-minute speech on an assigned topic. Each camper votes for three candidates following the speech with the top male, top female and person with the next highest vote total becoming next year's ambassadors. The top six finalists and ties are invited to return to next year's Youth Energy Camp as junior counselors.

High school students who are currently in the 9th, 10th or 11th grade and are served electrically by Norris Public Power District are eligible to attend. Camp expenses and transportation are provided by Norris Public Power. For an application or for more information, please contact Andrea Schafer in the Norris Public Power District Public Relations Department by May 1st at (402) 228.2847 or by email at [aschafer@norrispower.com](mailto:aschafer@norrispower.com).

# Hickman

UNVEILS PLAN FOR A LARGE

## RECREATIONAL & EVENT COMPLEX

**HICKMAN**  
NEBRASKA

POPULATION  
**1,687**

42.62°N, -96.63°W

C O U N T Y  
**LANCASTER**

**T**HE city of Hickman is planning for a new regional recreational and event complex to offer various sporting and entertainment opportunities for Hickman, the Norris School District and the surrounding areas. The Hickman City Council, with assistance from JEO Consulting Group, Inc. of Lincoln, developed a master plan for the complex which will include a drive-in theatre/multi-use festival area, four ball fields, multi-purpose soccer/football fields, play grounds, basketball and tennis courts, a skate park, picnic areas, trails and a dog exercise area.

“We feel we have provided for nearly every regional recreational need,” said Brett Baker, Hickman City Administrator and Economic Development Director. “The complex design is promoting regional use, shared facilities with the school district, economic development opportunities, efficient operation and recreational and event venues for area residents.”

The complex is still in the beginning stages of development. A Hickman Parks Foundation 501c3 will be formed to assist with funding and marketing the proposed regional complex. Additional planning, fundraising and marketing will take place in the years to come to make the Hickman regional recreational and event complex a reality.

The Norris District looks forward to providing electrical power to Hickman’s new recreational and event complex once it is built.

# Refrigerator Recycling Program

GET  
**\$35**  
FOR YOUR  
OLD FRIDGE



Chances are, that old working refrigerator or freezer in your garage or basement is running up your electric bill. That's because it can use three-times as much energy as a newer one.

But now there's an easy solution: We will pick up your older appliance for free, and you'll pick up \$35 in cold cash when you recycle it (Limit two per household).

So do something good for yourself, good for the environment and lower your energy bills, too.

- Recycling program resumed February 1, 2011
- Only a limited number of pickups available, so act now
- Program is available to residential customers only
- Refrigerators and freezers are both accepted
- Must be a working, secondary appliance
- Must be 10 cubic feet or greater in size
- A \$35 cash incentive will be paid for each appliance (up to two per household)
- Convenient at-home pick up
- Recycling performed by JACO Environmental (see below)
- This program enables you to work with Nebraska Public Power District (NPPD) and the Norris District to save money and help the environment

To schedule a **FREE**  
pickup, call toll-free

**1.866.444.9160**

or visit

**www.jacoinc.net**

JACO Environmental, an appliance recycler, will pick up and recycle refrigerators and freezers that are in working condition. This program is seasonal and available to residential customers of NPPD and its wholesale utility customers on a first-come, first-served basis. The program is partially funded through the Waste Reduction and Recycling Incentive Grant Program and the Nebraska Department of Environmental Quality. Customers must own the unit(s) being recycled. Limit two units per residential address.

*For program guidelines and more information about this recycling program, please visit our website at [www.norrisppd.com](http://www.norrisppd.com), or log on to [www.nppd.com](http://www.nppd.com).*



# Outage Notification Service



The District realizes that during major outage events, customers may have a difficult time getting outage information. Recognizing this, the District currently uses the Norris District website, Facebook, Twitter, local radio stations and newspapers to inform customers on the status of outages and restoration efforts. In an effort to further our ability to communicate with our customers, the District recently upgraded our Outage Management System software which now has the capability to notify customers by email or text message with outage information. In the future, the District may use this feature for large scale outage events to keep customers abreast of restoration efforts or to inform them of planned outage work in their area. Customers who sign up for this service will only receive specific information that pertains to their accounts that are affected by the outage. If you would like to receive email or text messages, please email us at [comments@norrispower.com](mailto:comments@norrispower.com) with your email address or cell phone number or complete the form below and mail it to:

**Norris Public Power District, P.O. Box 399, Beatrice, NE 68310.**

Account Name \_\_\_\_\_ Date \_\_\_\_\_

Account Number(s) \_\_\_\_\_

**Yes, I would like to receive outage email messages from Norris Public Power District.**

Email Address \_\_\_\_\_

**Yes, I would like to receive outage text messages from Norris Public Power District.**

Cell Phone Number \_\_\_\_\_ Cell Phone Provider \_\_\_\_\_

(AT&T, US Cellular, Verizon, etc.)

## Norris Public Power District Automatic Telephone Dialing System Courtesy Call Information

Norris Public Power District will perform courtesy calls to customers regarding account information at the direction of the customer. Courtesy calls may be made for various reasons, including when an account becomes past due or as a reminder that a customer needs to read their meter. The courtesy calls will be made by an automated dialing device to the cellular or landline phone number provided by the customer, if written consent is granted by the customer. Customers may provide written consent by completing this form and returning it to the Norris offices. If a customer does not provide written consent, the courtesy calls will not be made. Customers may rescind their courtesy call consent in the future by contacting one of the Norris offices.



### Automatic Telephone Dialing System Written Consent Form

**Yes, I would like to receive courtesy phone calls from Norris Public Power District regarding past due balances, meter reading reminders, planned outages, or for other District related business.**

\_\_\_\_\_ (customer/organization) and \_\_\_\_\_ (spouse/co-resident/business owner) hereby give express written consent to the Norris Public Power District or its assigns to be contacted via a phone call for courtesy calls regarding the account listed. I understand courtesy calls may be made for various reasons, including if my account becomes past due or as a reminder that I need to read my meter. I understand these courtesy calls will be made by an automated dialing device to the cellular or landline phone number listed herein or as later updated.

\_\_\_\_\_ Account Name Account Number Telephone Number

\_\_\_\_\_ Signature Date

Please return completed form to:  
Norris Public Power District,  
P.O. Box 399, Beatrice, NE 68310

# SAVE ENERGY

## while Doing Laundry

**LAUNDRY**  
AT THE AVERAGE  
AMERICAN HOME

**400**  
LOADS  
PER YEAR

**40**  
GALLONS  
OF WATER  
PER WASHER LOAD

**90%**  
OF THE ENERGY  
USED IS JUST TO  
**HEAT**  
THE WATER

**\$2,000**  
TO OPERATE  
A CLOTHES DRYER  
OVER ITS AVERAGE  
LIFE SPAN

More than likely, you or someone in your household has finished a load or two of laundry this week. In fact, the U.S. Department of Energy found the typical American household does nearly 400 loads of laundry per year, using about 40 gallons of water per full load with a conventional washer. Interestingly, up to 90 percent of the energy used while washing clothes comes from heating the water.

After the wash cycle, most people toss those clothes into the dryer for a spin. At an electric cost of \$0.10 per kilowatt-hour, the average clothes dryer will cost you nearly \$2,000 to operate over its expected lifetime of 18 years. When it comes to using energy among household plug-in appliances, the clothes dryer is second only to the refrigerator.

### IF YOU'RE IN THE MARKET OR DRYER, CONSIDER THE

**Buy** a high-efficiency front-loading washer. Top-loading washers may be the most popular model of washing machines, but front-loading washers are up to 70 percent more energy efficient since they have a larger capacity, which means fewer loads need to be done. Less water is needed per load so there is less water to heat and the higher speed spin cycle removes more water from the clean clothes. This reduces the dryer's workload. Front loaders also cause less wear and tear on clothes.

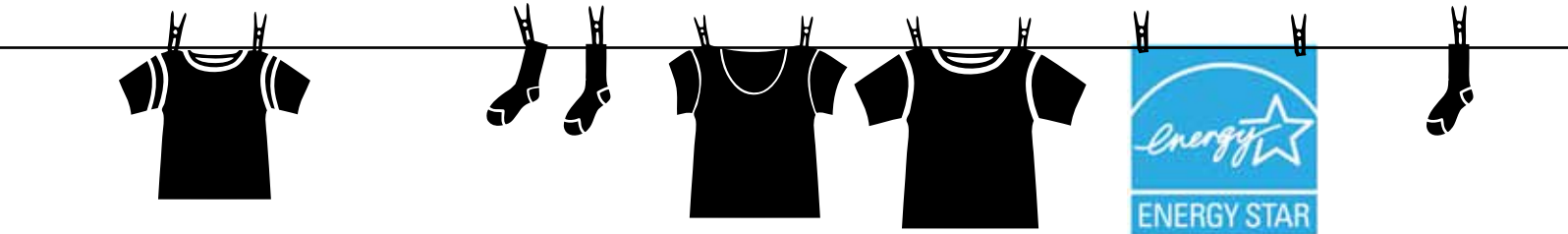
### CLOTHES DRYER TIPS

**Check** and clean the lint filter in the dryer after every load to improve air circulation.

**Locate** your dryer in a heated space. Putting it in a cold or damp basement or an unheated garage will make the dryer run longer and less efficiently.

**Dry** similar types of clothes together, such as lightweight fabrics or synthetics with other lightweight fabrics and cottons or other natural fibers with similar material.

**Don't** toss wet items into a partially finished load.




**TO PURCHASE A NEW WASHER USE ENERGY-SAVING MODELS:**

**Purchase** a dryer with moisture-sensing technology. The best dryers have moisture sensors in the drum for sensing dryness, which can save 15–20 percent on energy costs over a dryer that uses a timer.



FRONT-LOADING WASHERS ARE UP TO **70%** MORE ENERGY EFFICIENT

**CLOTHES WASHER TIPS**



**Set** washer loads for “warm” or “cold” wash instead of “hot.” Extra dirty loads might need a cold-water pre-soak. The only time hot water is needed is for oily/greasy stains.

**Run** only full, but not overfull, loads in your washer. Overloaded washers don’t clean clothes as effectively so they even may need to be rewashed.


**If** you must do a partial load, be sure to reduce the water level setting accordingly.

**WARM** ✓    **COLD** ✓    **HOT** ✗

**Don’t** aim for “bone dry.” If you take clothes out of the dryer while they are still slightly damp, you won’t need to do as much ironing. That is, if you hang them up right away after removing them from the dryer.

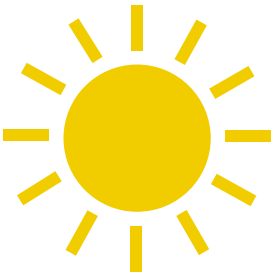
**Dry** full loads, but don’t overfill. The heated air needs to circulate to be effective.

**Put** two loads in a row in the dryer to make the most of the heat generated the first time around.



**Check** the outside dryer exhaust vent periodically. If it doesn’t close tightly, replace it with one that does to keep the outside air from leaking in. This will reduce heating and cooling bills.

Of course, one of the cheapest means of drying clothes uses no appliance whatsoever. The simple clothes line and clothes pins have worked well for years. When weather permits, using the heat of the sun and drying power of breezes can be a very EnergyWise choice! If Jay Boyer of Liberty would please call the



Area 3 – Beatrice office we will arrange to have a serviceman deliver your Kill-A-Watt device.



# 2011 Operation ROUND UP 1st Quarter Results

In 2001, Norris Public Power District launched the "Operation Round Up" program. Operation Round Up is a voluntary program in which customers select to have their monthly electric bills "rounded up" to the next highest dollar. The additional cents are placed in the Norris Power Goodwill Fund. This fund is administered by a board of directors made up of one Norris customer from each of the five counties we serve. The board meets quarterly to consider requests and make disbursements. Since its inception, Operation Round Up has granted over \$429,000 to organizations within our five county service area.



Operation Round Up granted \$1,500 to the Zion Lutheran School Parent/Teacher League in Tobias for the purchase of new computers.



Blue Valley Nursing Home in Hebron purchased this player piano with the help of a \$1,200 grant from Operation Round Up.

Award Amount	Organization/Agency	Purpose
\$50	District OR-1 Public School, Palmyra	Post prom
50	Norris High School	Post prom
100	Saturday Evening Meals & Fellowship, Fairbury	Gift cards for supplies
250	Diller-Odell Students Against Drugs & Alcohol	Drug free education & materials
456	Plymouth Library	2 Task chairs & 1 desk chair
500	Gage County United Way	Projector
500	Southwest Gage County History Preservation Association	Cemetery walk thru entrance gates
600	Diller-Odell K-12 Booster Club	Volleyball system
646	Gage County Emergency Management	Nx300 handheld radio
1,000	Big Indian Archers, Wymore	Playground equipment
1,000	Crete Athletic Booster Club	Wrestling mat
1,000	DeWitt Volunteer Fire Department	Pagers
1,000	Plymouth Silver Circle	Double door refrigeration unit
1,000	Tobias Volunteer Fire Department	Pagers
1,500	Wilber Area Chamber of Commerce	Welcome signs

**Total Amount Awarded for 1<sup>st</sup> Quarter = \$9,652**

*If your organization has received a donation from Operation Round Up funds, send us a photo showing how you've benefitted and we'll feature it in an upcoming issue of the Norris News!*

# COOK of the Month—Nicole Sheffield

Filley, NE



Nicole Sheffield was raised in a family where sit-down group dinners were the norm. A native of Virginia and wife of a soldier, it should come as no surprise that tradition is important to her. And she's working hard to instill the value of family dinners in her own children, ages five and seven.

Nicole currently resides in Filley with her husband, Joshua, and her two boys, Jason (7) and Aaron (5). Nicole and Joshua met through mutual friends while he was stationed at Ft. Eustis, Virginia as a platoon Sargent in the U.S. Army. Shortly after getting married, the Army offered Joshua a position as a recruiter and transferred the newlyweds to Kearney, Nebraska. Three years and two boys later, they arrived in the greater Beatrice area where Joshua continues his work as a U.S. Army Recruiter out of their Lincoln office.

Nicole's children have both started school in the past couple years and currently attend Lewiston Consolidated School (LCS). With her newfound free time, Nicole volunteers at the Beatrice Humane Society, substitutes at LCS and runs a small in-home photography business.

Although the family is unable to sit down together every night, they strive to have family nights as often as possible so they can share stories about their day. When Nicole mentioned this article to the boys, she asked them which recipes she should include. It is not surprising that they selected desserts. Three of the family favorites are listed below for your enjoyment.

## Butterfinger Delight

- 2 cups graham crackers, crushed
- 1 cup soda crackers, crushed
- 1 stick melted butter
- 2 packages (3 oz.) instant vanilla pudding
- 2 cups milk
- 1 qt. soft vanilla ice cream
- 1 small container Cool Whip
- 6 small or 3 large Butterfinger candy bars

Make the crust the night before by crushing the graham crackers and soda crackers. Mix them with the butter. Pour 2/3 of the crust mixture into a 9x9 pan.

Beat the pudding, milk and ice cream together. Pour this over the cracker crust. Chill for 20 minutes. Spread the containers of Cool Whip on top of the chilled layer. Crush the candy bars and mix them with the remaining half of the cracker crumb mix. Sprinkle that over the top. Refrigerate.

## Fruit Trifle

- 3 cups cold milk
- 2 packages (4-serving size) vanilla flavor instant pudding
- 1 tub (8 oz.) whipped topping, thawed
- 1 package (12 oz.) pound cake, cut into 1/2-inch cubes
- 1/4 cup orange juice
- 2 cups sliced strawberries

Pour milk into large bowl. Add pudding mixes. Beat with wire whisk 1 minute. Gently stir in 2 cups of whipped topping. Arrange 1/2 of the cake cubes in 3 1/2-quart serving bowl. Drizzle with 1/2 of the orange juice. Spoon 1/2 of the pudding mixture over cake cubes. Top with strawberries. Layer with remaining cake cubes, orange juice, and pudding mixture. Refrigerate until ready to serve (about 1 hour). Top with remaining whipped topping and garnish as desired.

## Watergate Salad

- 9 oz. container Cool Whip
- 1 can (16 oz.) crushed pineapple
- 1 small box instant pistachio pudding
- 1 cup mini marshmallows
- 1/2 cup chopped walnuts (optional)
- Cherries (optional)

Make the pudding by following the directions on the package. Fold in the Cool Whip and the remainder of the ingredients. Top with walnuts and cherries. Refrigerate.

### Feature a COOK of the Month

If you know of someone in our area you would like to see featured as the Cook of the Month, please send an email to [comments@norrispower.com](mailto:comments@norrispower.com) or call our Beatrice office at 402.223.4038.

# Community Events Calendar

For the most current list of community events, visit [www.norrisppd.com](http://www.norrisppd.com) and look for the Community Events Calendar on the right side of your screen.

## SATURDAY, MARCH 12

### Kelsey Manchester Fundraiser, 4th Grade Meningitis Survivor from Tri-County Schools

Swanton Auditorium

5:00 PM–8:00 PM

BBQ pork sandwich meal, silent auction and bake sale

Proceeds will help cover medical expenses and

hearing aids

Freewill donation

To donate, contact First Tri-County Bank at 402.448.2285

## SUNDAY, MARCH 13

### Annual DeWitt Historical Society Soup Feed

DeWitt Community Center

11:00 AM–12:30 PM

Public invited

## SUNDAY, MARCH 20

### 27th Annual Consignment Sale

Saline Center Dance Hall (25 miles north of Fairbury on Hwy 15)

## SATURDAY, MARCH 26

### Annual Woman's Club China Luncheon

The Steak House Restaurant, Hubbell

Doors open at 11:00 AM

Luncheon at 12:30 PM

Tickets \$12 – reservations required

Contact: Freda Wiedel at 402.324.4156

Proceeds go toward community improvement

## SATURDAY, MARCH 26

### Virginia American Legion Consignment Sale

Main Street, Virginia

10:00 AM

Consignments accepted until 9:00 AM on sale day

Questions: Contact First State Bank (Filley) at 402.662.3555

or Citizens State Bank (Virginia) at 402.688.4272

Sponsored by Fisher Post #367 & Sons of American

Legion #367

## WEDNESDAY, MARCH 30

### Denton Community Historical Society Soup Supper

Denton Community Center

4:30 PM–7:00 PM

Terrific chili, awesome chicken noodle soup, homemade pie and more!

Freewill offering

## SATURDAY, APRIL 9 & SUNDAY, APRIL 10

### Alexandria Community Club Meal & "Double Take at Beatrice's Boarding House" Melodrama

Alexandria Community Center

Saturday dinner served from 5:00 PM–7:00 PM

Adults \$5, children under 12 \$2.50

Saturday Melodrama & Silent Auction 7:00 PM

Sunday Melodrama 3:00 PM

Melodrama tickets: \$5 adults, \$2.50 children 12 & under

For more information, call 402.749.3425 or 402.749.3255

Proceeds will go towards gym repairs

## SATURDAY, APRIL 9

### Beatrice Community Hospital Health Expo

Southeast Community College – Truman Center

7:30 AM–10:30 AM

Reduced price blood chemistry test, skin cancer screening, vision and hearing screening, and much more

## SATURDAY, APRIL 16

### Fairbury City-Wide Garage Sales

Beginning at 7:00 AM

Maps at Casey's, Maatsch's, Ray's and Schroeder's

Sponsored by Jefferson Co. 4-H Jr. Leaders

For more info, contact Jefferson Co. Ext.

at 402.729.3487

## SUNDAY, APRIL 17

### United Methodist Church of Swanton

#### Pancake Feed

10:00 AM–2:00 PM at the Swanton gym

All you can eat pancakes, biscuits and sausage gravy,

scrambled eggs, sausage, fruit, coffee & juice

Freewill donation

## FRIDAY, APRIL 22

### Good Friday Drama

Firth Reformed Church, 603 Russell Street, Firth

7:00 PM

Freewill offering

Babysitting provided

Experience a dual look at the biblical description of Good

Friday compared with our actions and reactions today

## SATURDAY, APRIL 23

### Cortland's Annual Easter Egg Hunt

Registration at 9:45 AM

Events from 10:00 AM–11:00 AM

Includes activities for kids, refreshments, an

appearance by the Easter Bunny and an egg hunt!

## FRIDAY, MAY 6 & SATURDAY, MAY 7

### Western Community Garage Sales

Friday from 4:00 PM–8:00 PM

Saturday from 8:00 AM–2:00 PM

For more information, contact Cindy Henke

at 402.433.4841

## SATURDAY, MAY 21

### Camp Creek Antique Machinery Swap Meet and Flea Market

17200 Bluff Road, Waverly (2 miles east on Bluff Road from Waverly Intermediate School on 148th and Bluff Road)

Starts at sunrise with a pancake breakfast, good food all day

Free admission

\$20 vendor fee

For general information, call 402.421.6442,

402.786.3003, or visit [www.ccthreshers.org](http://www.ccthreshers.org)